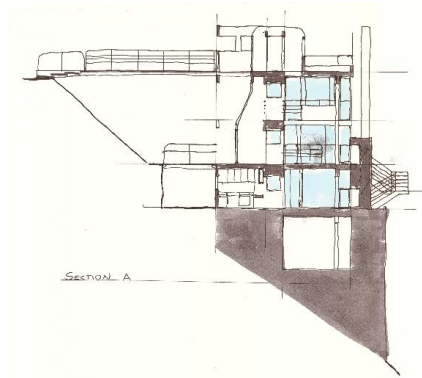


Graphics I_EVDA 541_ARST 451: Boutin + Parker Fall 2017
Assignment 2: Precedent Drawings (Orthographic Digital)
Assigned: 2017.09.18
Due: 11:59 PM, 2017.09.24



Douglass House (Richard Meier)
by Daniel Szymanski 2015

Process

For this project, you will use the precedent project you have selected in studio to produce a series of scaled plan, section and elevation drawings.

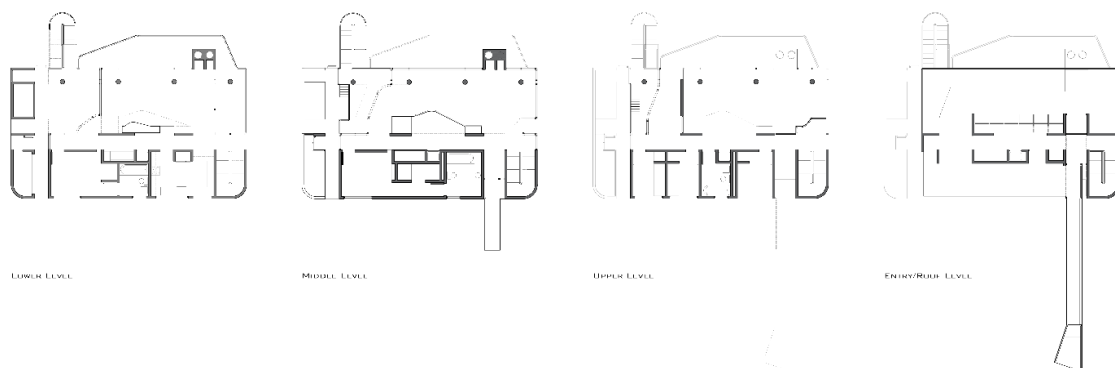
Part 1

From the materials collected in your precedent research you will first produce a series of hand drawn sections, plans and elevations of the project. The scale of these drawings is not as important as trying to work on the proportions. What is the relative height of certain elements in the project? Are the spaces long and narrow or equal in all directions?

Annotate your drawings with notes that will help you understand the scale of the house and its components.

Part 2

Using Rhino, draft the plans, a section (or 2) and the elevations of the selected project.



Douglass House (Richard Meier)
by Daniel Szymanski 2015

Deliverables:

Upload the following to your blog by 11:59 pm on Sunday, September 24th.

- 4-10 sketched orthographic drawings
- Plans, Sections and Elevations scaled at $1/8"=1'0"$
- Save as image files and post to your blog with labels identifying the drawing view and the project.